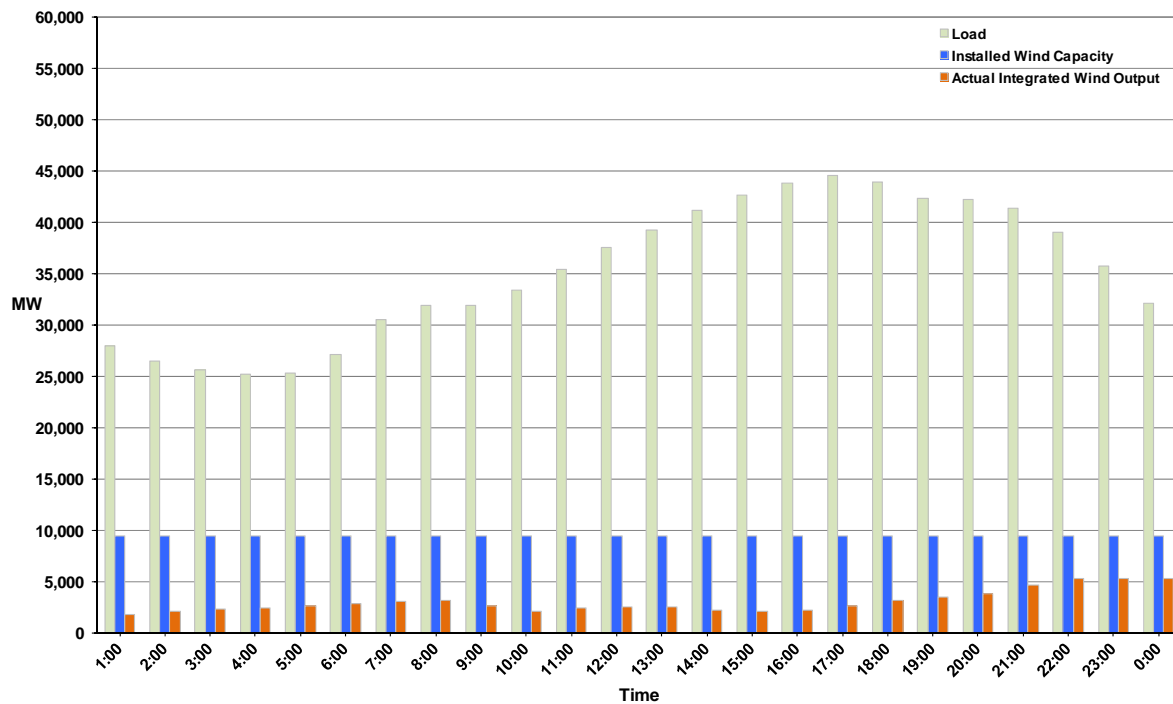




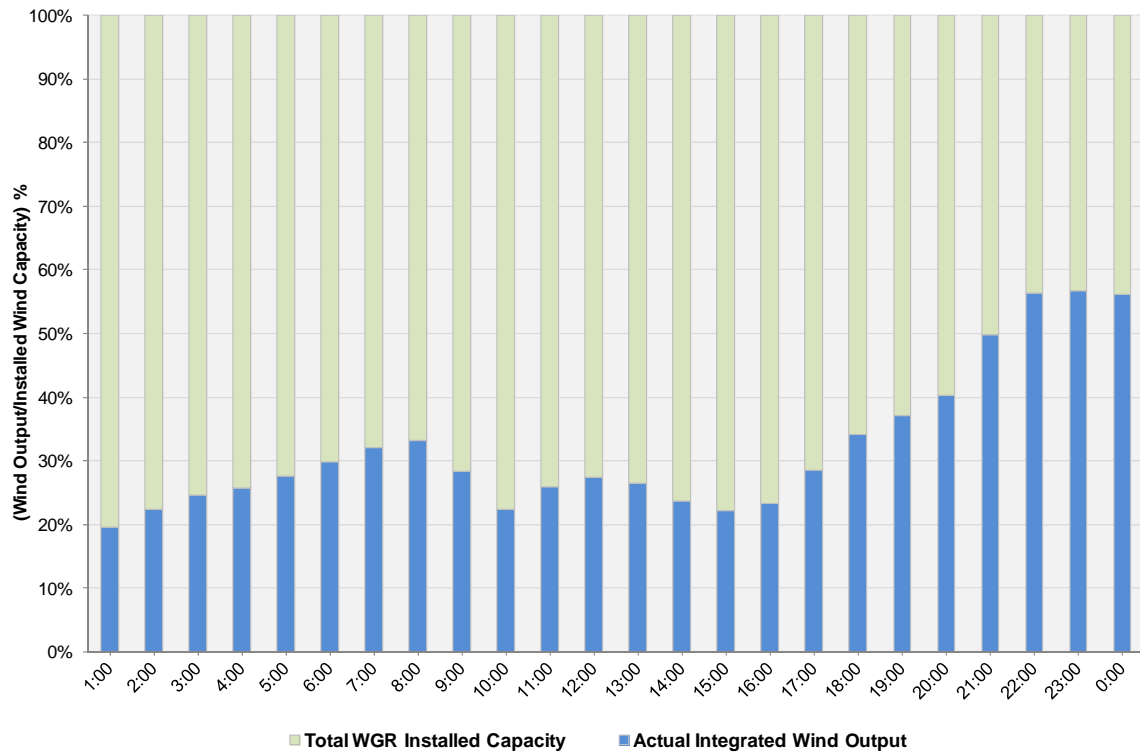
## ERCOT Grid Operations Wind Integration Report: 10/11/11

Peak Load	44,535 MW
Load Peak Hour	17
Wind over Peak	2,687 MW
Wind Record 10/07/11	7,400 MW
Max Wind Value	5,432 MW
Wind Peak Time	21:27
Wind Integration %	13.88%

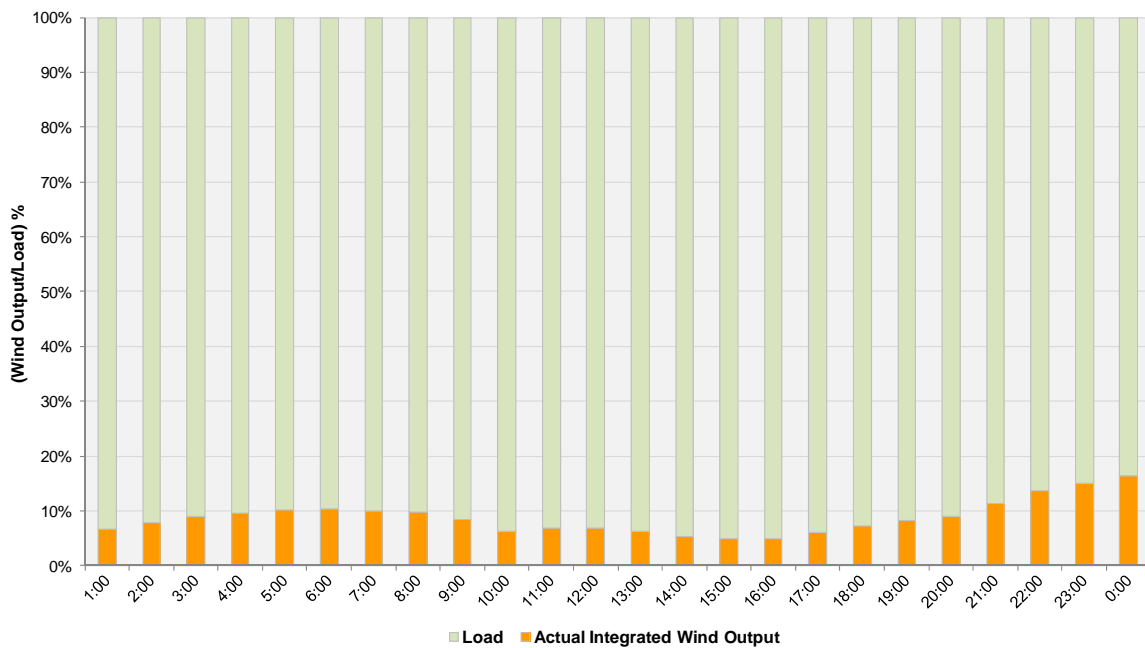
Hourly Average Actual Load vs. Actual Wind Output  
10-11-2011



**Actual Wind Output as a Percentage of the Total Installed Wind Capacity**  
**10-11-2011**



**Actual Wind Output as a Percentage of the ERCOT Load**  
**10-11-2011**



ERCOT Load vs. Actual Wind Output 10/4/2011 - 10/11/2011

